

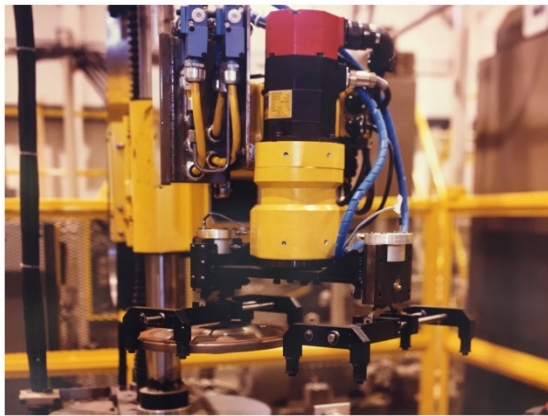


WORLD LEADER IN STEADY REST TECHNOLOGY

www.arobotech.com

About us

Arobotech Systems, Inc. was founded in response to the need for improvement in workholding technology. From the beginning we have been dedicated to supplying simple, precise true-centering devices. The products we've developed have been awarded a number of patents with others applied for and pending. Our dedication to research and development results in continuous product improvement and innovative new technology.



Arobotech Systems TRUE-GRIP[®] and PARA-GRIP[®] grippers and precision centering devices offer a unique solution to accurately positioning any part. The sliding wedge design gives them strength and rigidity for extraordinary accuracy and reliability.

TRUE-GRIP[®] and PARA-GRIP[®] grippers and precision centering devices are equally at home in production environments or on prototype machines. The rugged construction stands up to years of use in a high volume production environment. Ease of installation and alignment make changeover fast and painless.

Quality is our highest priority. All components are designed, manufactured and assembled in our facility using state of the art equipment.

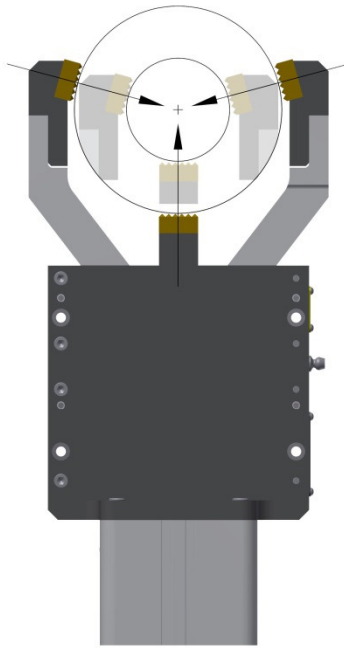
100% of our the components that make up PARA-GRIP[®] and TRUE-GRIP[®] are subject to detailed inspection before assembly. All critical sizes and features are measured and confirmed against engineering drawings and customer specifications. Performance is also tested and certified to ensure each gripper and centering device meets our exacting standards before it reaches your machine.



PARA-GRIP[®] and TRUE-GRIP[®]

Arobotech Systems grippers and centering devices offer the most flexible and precise option available on the market. Designed and manufactured to the same exacting standards as our AUTO REST[®] products, the quality of our grippers and centering devices ensure long life and trouble free operation

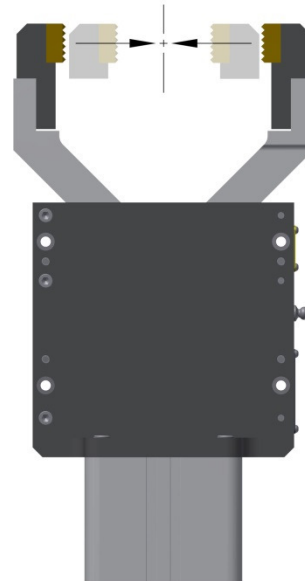
There are a number of standard models available to choose from. Each model has a large clamping range to handle a wide range of parts. If one of our standard models doesn't meet your requirements we offer many custom models or can have our full time engineering staff design to fit your specific needs.



Three point gripper

True-Grip is an accurate, self-centering three point gripper. All parts within the clamping range are automatically centered.

Interchangeable tooling makes True-Grip an effective, flexible solution for your centering needs

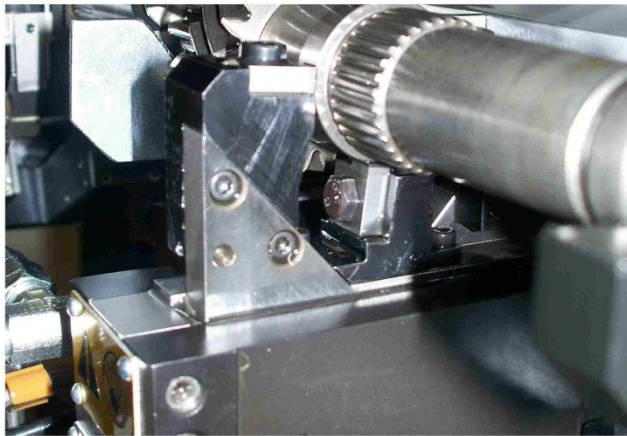


Parallel gripper

Para-Grip[®] is a true parallel motion gripper. Interchangeable fingertip tooling makes Para-Grip an ideal centering solution

Applications

TRUE-GRIP® and PARA-GRIP® offer versatile solutions to wide variety of workholding needs. Either can be constructed from hard anodized aluminum when weight is a concern or hardened steel when more strength is required. Interchangeable tooling can be designed to meet your exact needs. Actuation can be pneumatic or hydraulic depending on the application requirement.



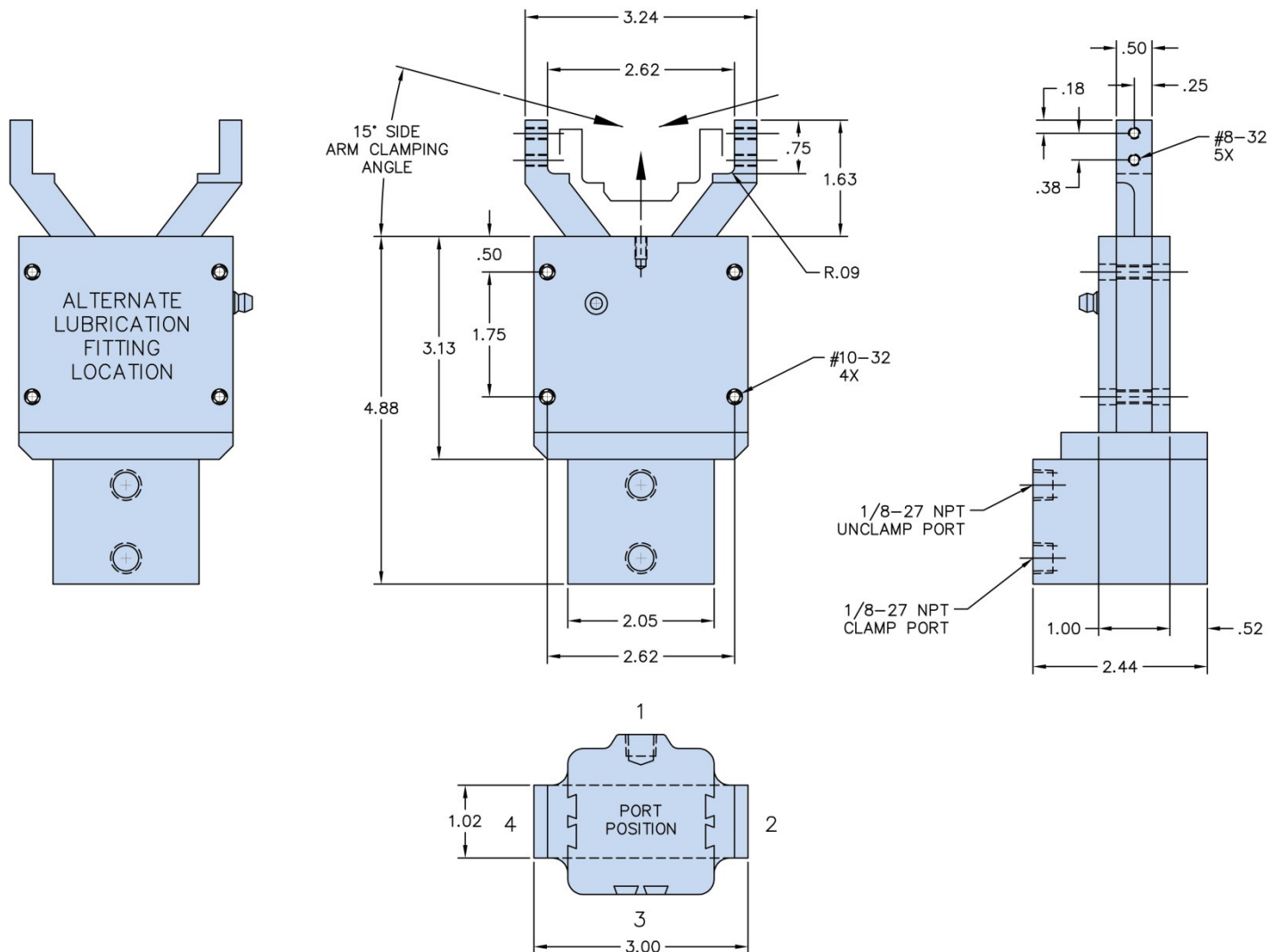
TRUE-GRIP® and PARA-GRIP® are manufactured to the same exacting standards as our Grinding AUTO REST® products. This allows for the same level of precision workholding including our industry leading .001mm repeatability. Specialty tooling is available for +/- .003mm clamping centering accuracy over a family of part sizes for full automatic operations.

Design flexibility allows TRUE-GRIP® and PARA-GRIP® to be mounted in any orientation for accurate, reliable workholding for many manufacturing processes.



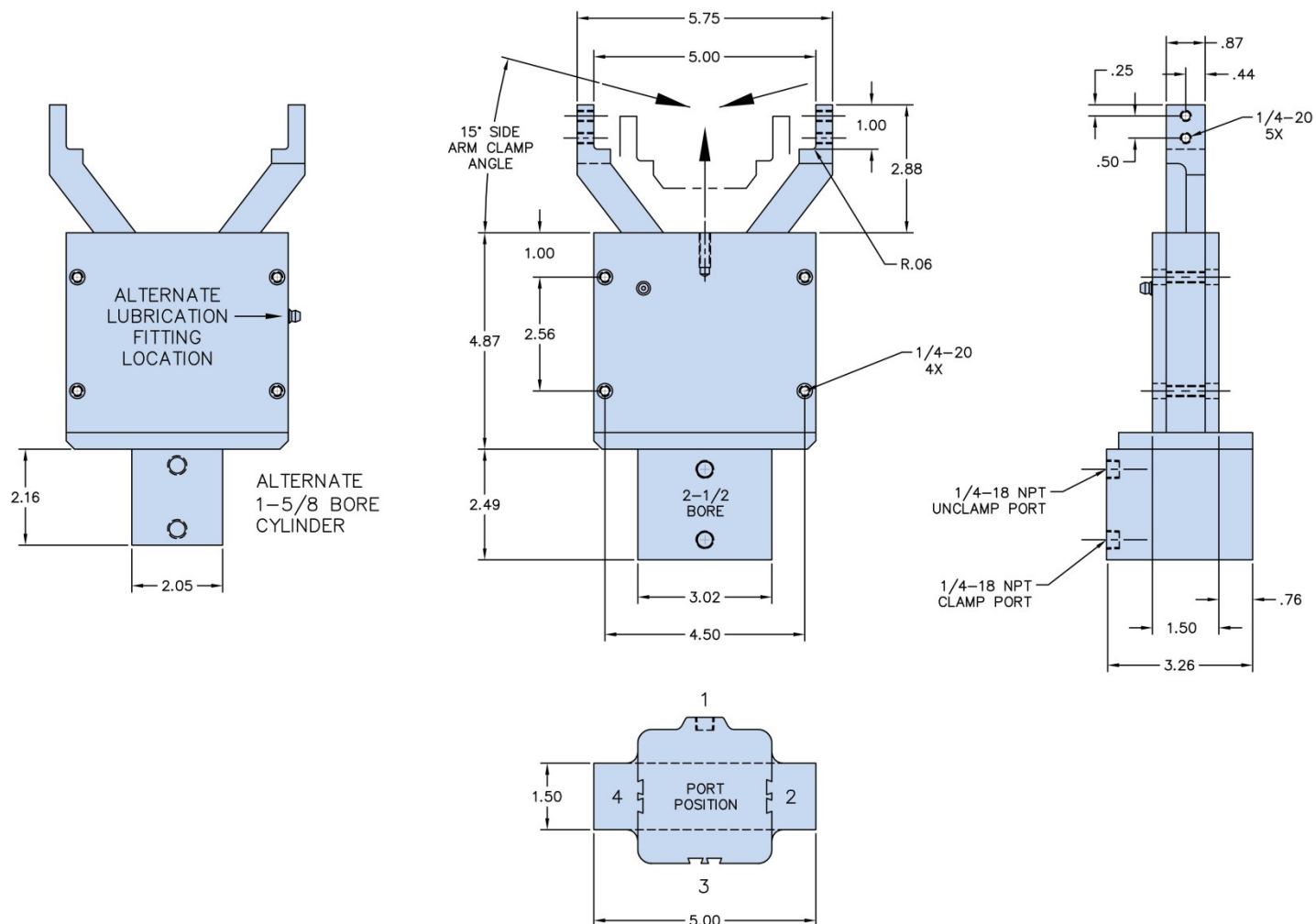
Not sure if this is the right product for you? Contact us at sales@arobotech.com for free assistance with

- Model selection
- Special Models
- Process Review
- 3D Models
- Accessories
- Machine integration
- Modifications
- Special features
- Mounting Bases
- Spare Parts

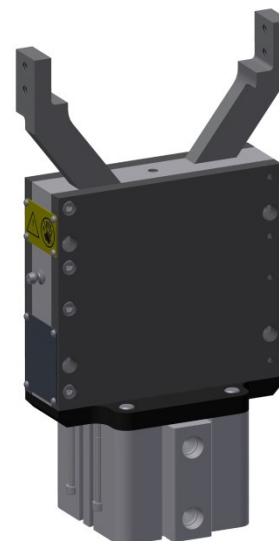


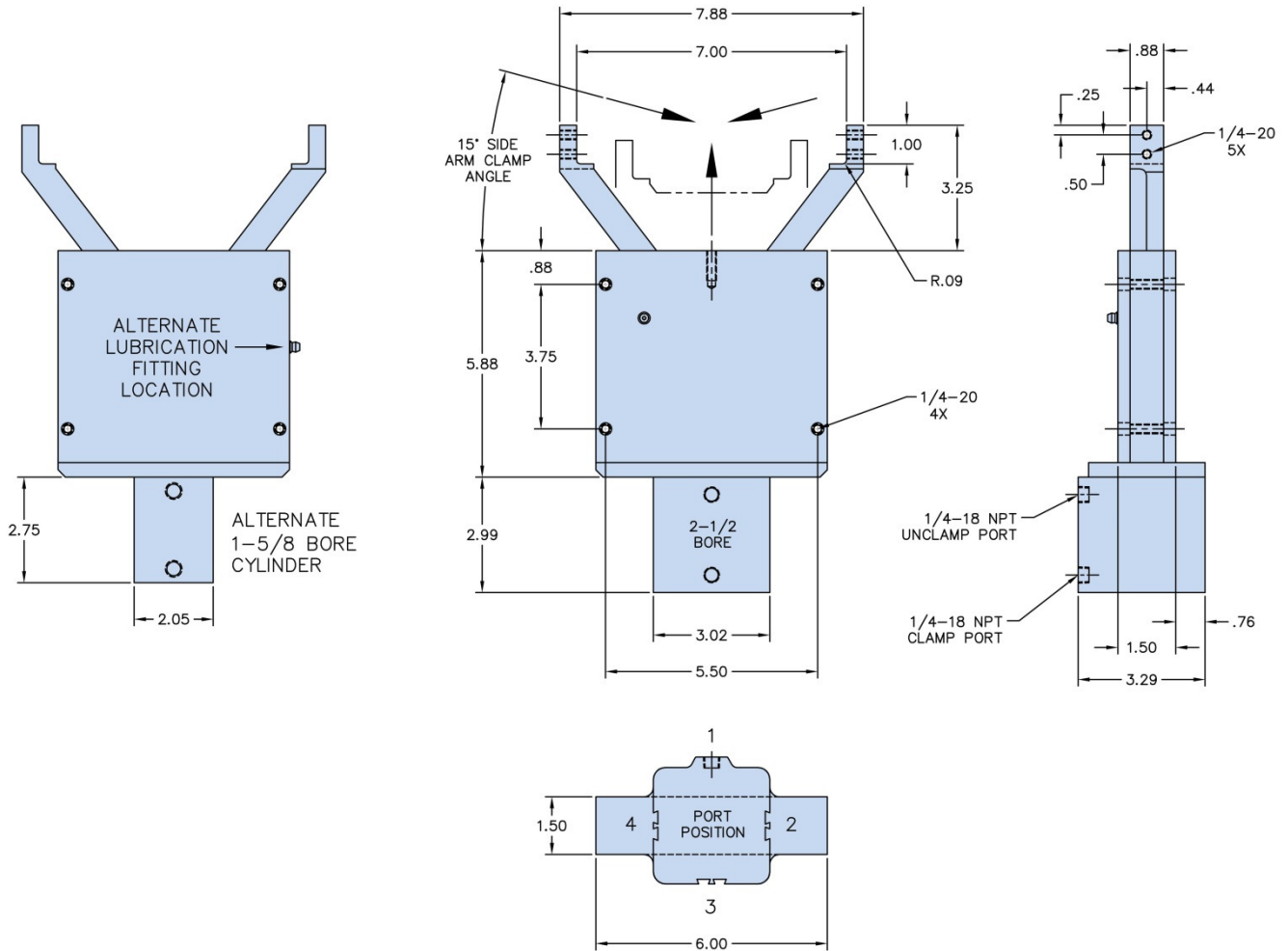
Maximum Clamp Size	in	2.00
Actuation		Air
Piston Area	in ²	2.07
Cylinder Stroke	in	.50
Operating Pressure	psi	80 - 100
Maximum Pressure	psi	100
Estimated Total Gripping Force	lbf	80
Lubrication		Manual Grease
Mass (less tooling)	lbs	1.9



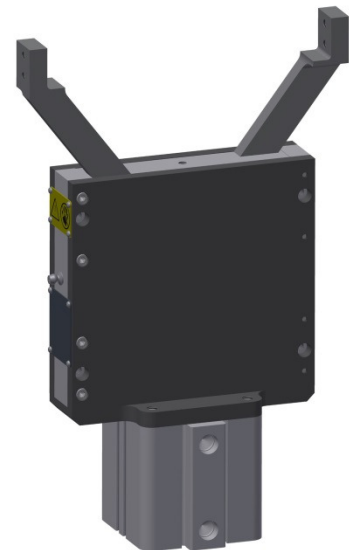


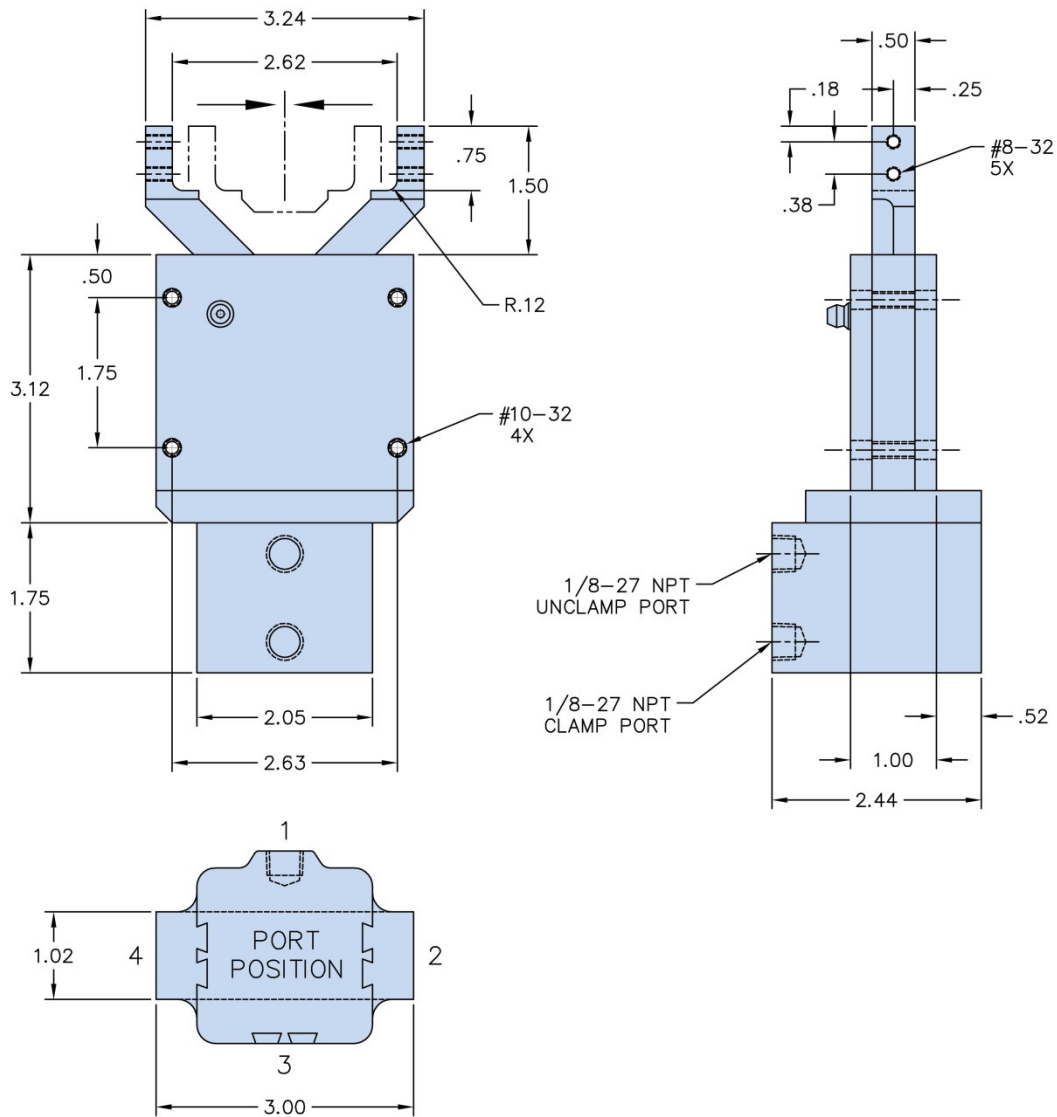
Maximum Clamp Size	in	4.25
Actuation		Air
1-5/8 Bore Piston Area	in ²	2.07
2-1/2 Bore Piston Area	in ²	4.91
Cylinder Stroke	in	1.00
Operating Pressure	psi	80 - 100
Maximum Pressure	psi	100
1-5/8 Bore Estimated Gripping Force	lbf	80
2-1/2 Bore Estimated Gripping Force	lbf	195
Lubrication		Manual Grease
Mass (less tooling)	lbs	7.0





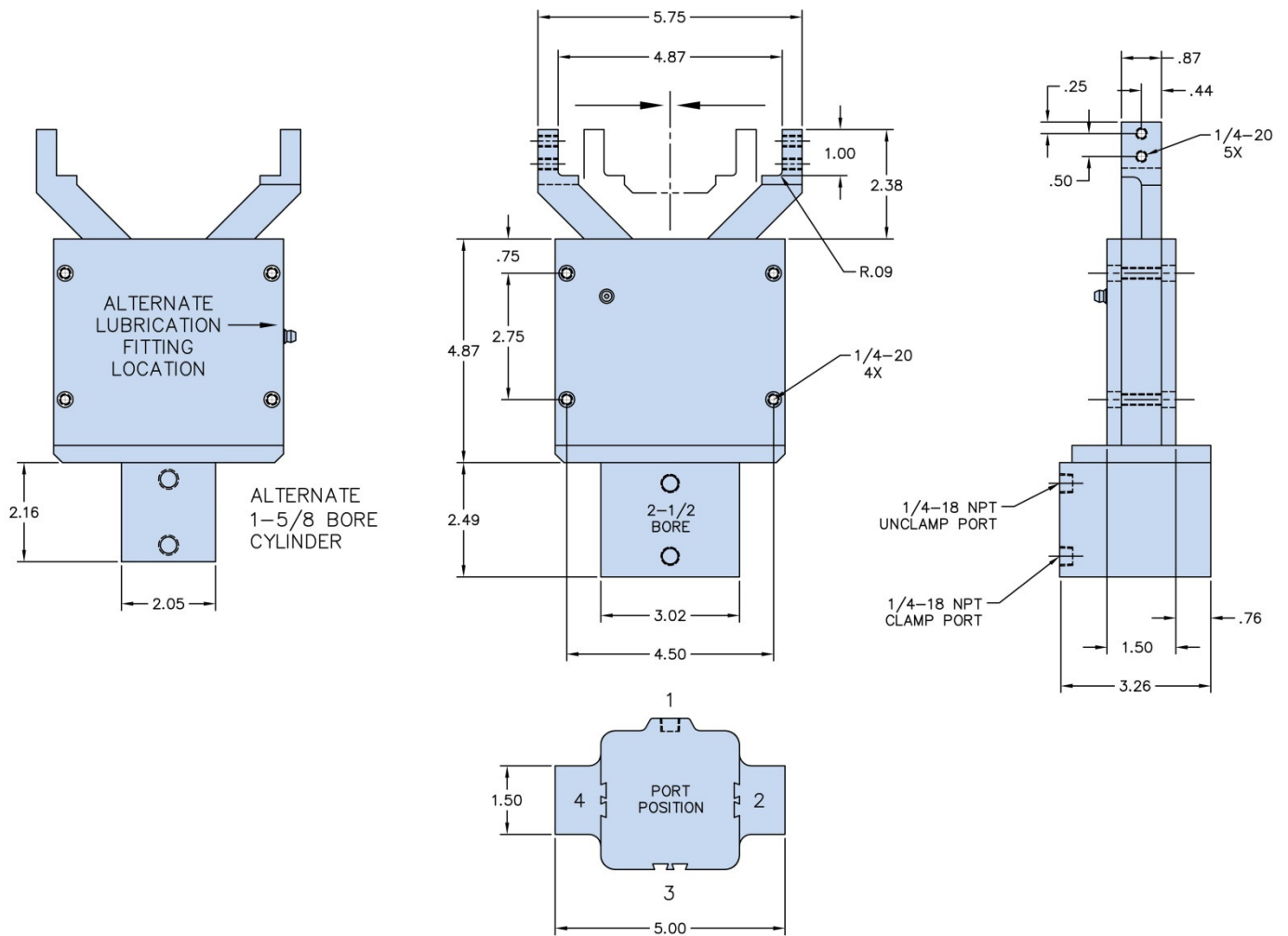
Maximum Clamp Size	in	6.00
Actuation		Air
1-5/8 Bore Piston Area	in ²	2.07
2-1/2 Bore Piston Area	in ²	4.91
Cylinder Stroke	in	1.50
Operating Pressure	psi	80 - 100
Maximum Pressure	psi	100
1-5/8 Bore Estimated Gripping Force	lbf	80
2-1/2 Bore Estimated Gripping Force	lbf	195
Lubrication		Manual Grease
Mass (less tooling)	lbs	8.0



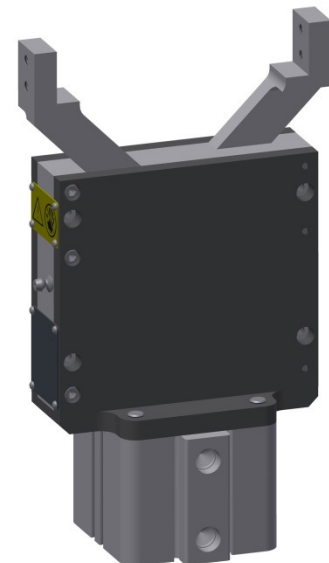


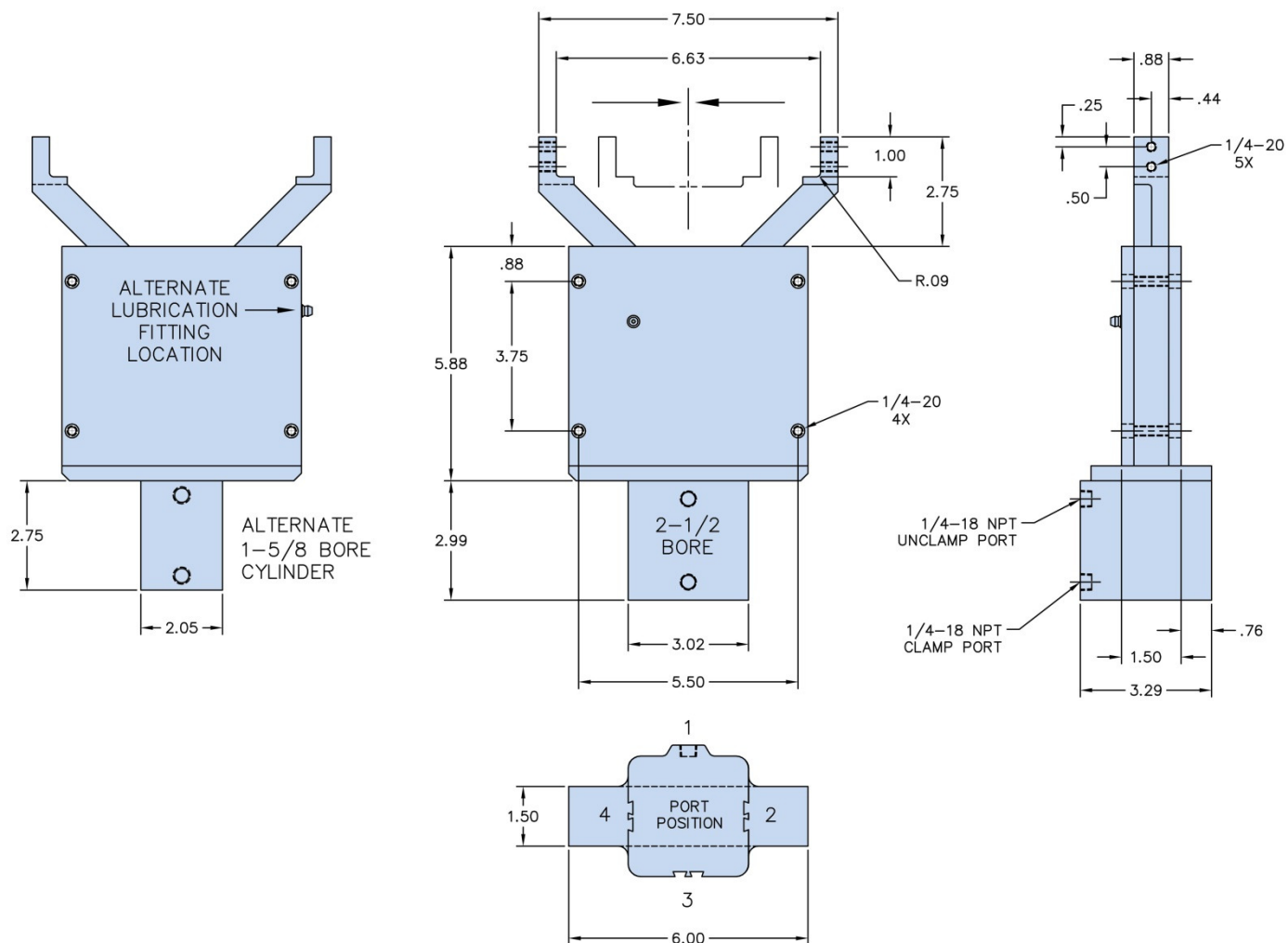
Maximum Clamp Size	in	2.00
Actuation		Air
Piston Area	in ²	2.07
Cylinder Stroke	in	.50
Operating Pressure	psi	80 - 100
Maximum Pressure	psi	100
Estimated Total Gripping Force	lbf	80
Lubrication		Manual Grease
Mass (less tooling)	lbs	1.9



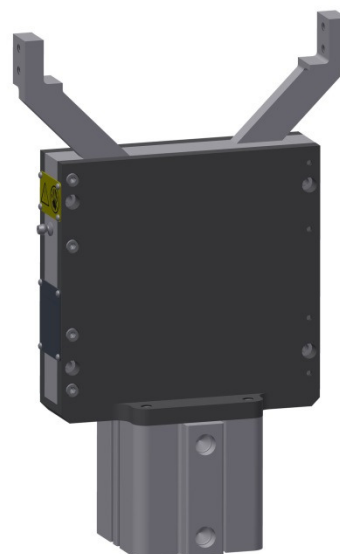


Maximum Clamp Size	in	4.25
Actuation		Air
1-5/8 Bore Piston Area	in ²	2.07
2-1/2 Bore Piston Area	in ²	4.91
Cylinder Stroke	in	1.00
Operating Pressure	psi	80 - 100
Maximum Pressure	psi	100
1-5/8 Bore Estimated Gripping Force	lbf	80
2-1/2 Bore Estimated Gripping Force	lbf	195
Lubrication		Manual Grease
Mass (less tooling)	lbs	7.0





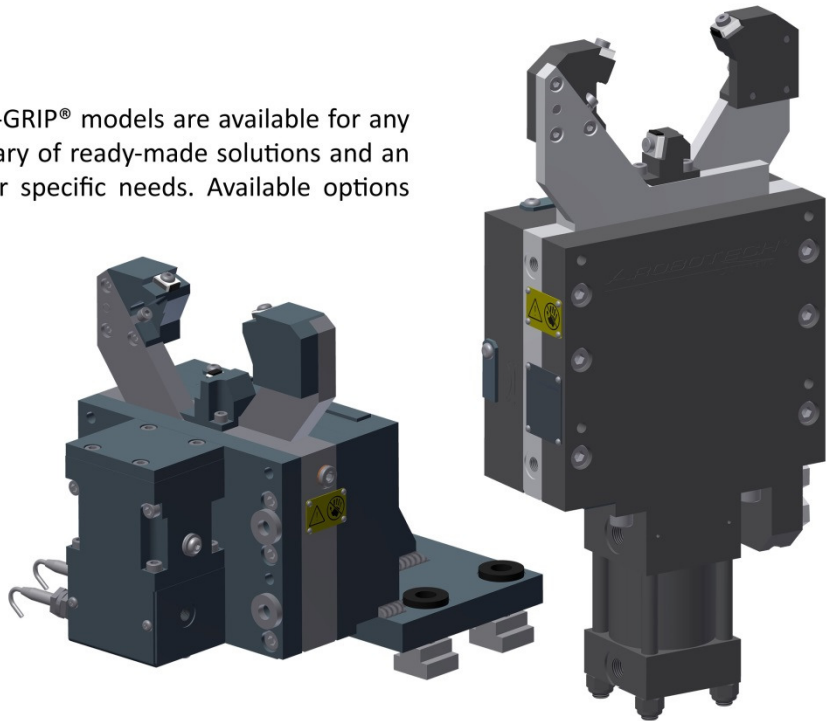
Maximum Clamp Size	in	6.00
Actuation		Air
1-5/8 Bore Piston Area	in ²	2.07
2-1/2 Bore Piston Area	in ²	4.91
Cylinder Stroke	in	1.50
Operating Pressure	psi	80 - 100
Maximum Pressure	psi	100
1-5/8 Bore Estimated Gripping Force	lbf	80
2-1/2 Bore Estimated Gripping Force	lbf	195
Lubrication		Manual Grease
Mass (less tooling)	lbs	8.0



Special Models

Special versions of our TRUE-GRIP® and PARA-GRIP® models are available for any workholding application. We have a large library of ready-made solutions and an engineering staff available to design for your specific needs. Available options include:

- Air or hydraulic operation
- Side mount cylinder to save space
- Arm retraction for part loading clearance
- Position feedback sensors
- Internal adjustment for ease of alignment
- .001mm Repeatability
- +/- .003mm Total centering accuracy

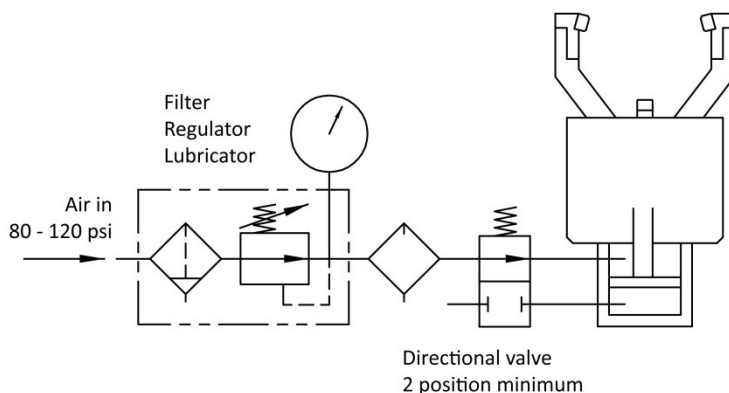


Contact sales@arobotech.com for more information

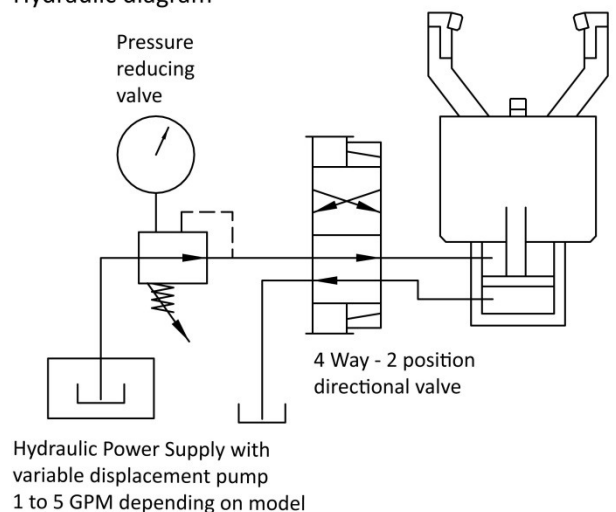
Installation

Schematics below show typical pneumatic and hydraulic requirement to operate TRUE-GRIP® and PARA-GRIP®. Contact service@arobotech.com for more information

Pneumatic diagram



Hydraulic diagram





Arobotech Systems, Inc.
World Headquarters
1524 E. Avis Drive
Madison Heights, MI 48071 USA
+001 (248) 588-9080
+001 (248) 588-9370 (fax)
Sales@arobotech.com
Service@arobotech.com



GSN Schleiftechnik GmbH
Im Moosfeld 5
73495 Stöttlen
Germany
+49 (0)7964 – 33111 790
Info@arobotech.de



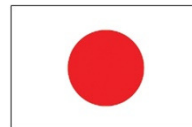
AMT Shanghai Technology
and Service Center (AMT STC)
No.8 Building, No.81 MeiYue Road
China (Shanghai) Pilot F.T.Z.
Shanghai, 200131, P.R. China
+86 21 5868 2809 - 109
+86 21 5868 2803 (fax)
Info@arobotech.cn



P R Sales Corporation Pvt. Ltd.
Flat 3, Kedar Apartments
Plot 48, Mayur Colony, Kothrud
Pune, Maharashtra 411038
India
Tel. +91-20-25437591
Fax +91-20-25445255
info@prsales.in



Seong Eun Tech.
294-1, Sangbuk-ro,
Sangbuk-myeon, Ulju-gun,
Ulsan 689-821 Korea
+82 052 256 5758
+82 052 256 5760 (fax)
Info@arobotech.co.kr



Mitsubishi Corporation Technos
Dai Nagoya Building, 3-28-12,
Meieki Nakamura-ku
Nagoya City, Aichi Prefecture
450-6418 Japan
+81-52-565-2641
+81-52-565-1989 (fax)
e100_arobotech@mmts.co.jp

WORLD LEADER IN STEADY REST TECHNOLOGY

www.arobotech.com