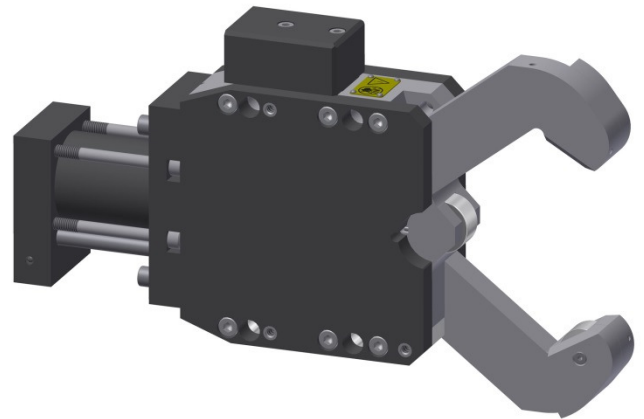


|                       |                 |                                    |
|-----------------------|-----------------|------------------------------------|
| Maximum Clamp Size    | mm              | 105                                |
| Minimum Clamp Size    | mm              | 12                                 |
| Max Workpiece Speed   | Meters per Min  | 640                                |
| Max Lifting Capacity  | kg              | 190                                |
| Piston Area           | cm <sup>2</sup> | 20.3                               |
| Cylinder Stroke       | mm              | 54                                 |
| Operating Pressure    | bar             | 7 - 40                             |
| Maximum Pressure      | bar             | 40                                 |
| Air Purge Pressure    | bar             | 0.3 - 0.5                          |
| Lubrication Frequency |                 | Working Cycle (or every 6 minutes) |
| Repeatability         | mm              | ±0.005                             |
| Centering Accuracy    | mm              | ±0.020                             |
| Mass                  | Kg              | 20.4                               |



Included Features:

- \* Hydraulic Operation
- \* Integrated Pilot Operated Safety Check Valve
- \* Oil Lubrication
- \* Air Purge

Options:

- \* Manual Grease Lubrication